



747 Commercial Road, London, E14

BUTLER & STAG



Characterful two bedroom apartment set within the grade II listed Mission Building, an iconic historical landmark close to Limehouse station.



- Two Bedroom Apartment
- Resident Amenities
- Vibrant Location
- Furnished
- Iconic Historical Building
- Close to Limehouse Station
- Well Presented and Spacious
- Available from 19th September 2025

Well-presented throughout and situated on the third floor, the property spans over 700 Sq/Ft of accommodation and comprises of a large reception space which is semi open-plan to a fully integrated kitchen, two double bedrooms with fitted wardrobes, a smart modern bathroom and useful hallway storage.

The Mission Building, once known as the Empire Memorial Sailors' Hostel is a secure development with entry system, lift access, communal gardens, a roof terrace with panoramic views and bike storage. Also included are a small-scale gym that's exclusive to residents and a porter service from Monday to Friday.

The location is a convenient and vibrant one, with Limehouse station and an array of amenities nearby, as well as the Limehouse Cut and Basin offering the opportunity for serene walks and runs along the water.

Offered furnished and available from 19th September 2025.

EPC Rating C
Council Tax Band D





Commercial Road

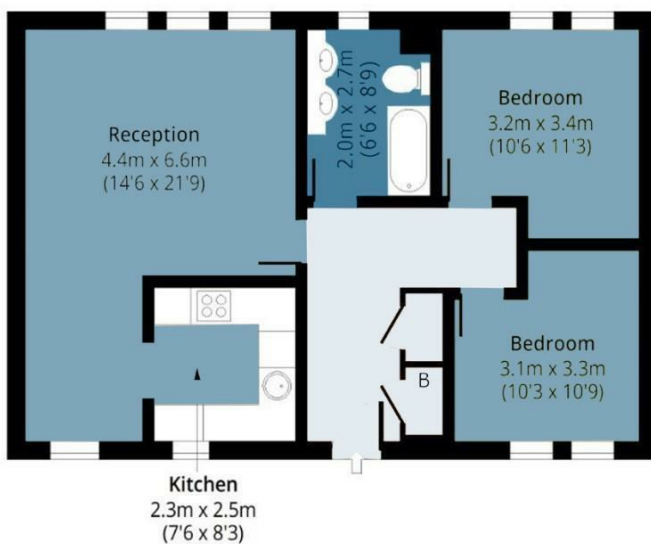
Approx. Gross Internal Area 67 Sq M (721 Sq Ft)

BUTLER & STAG



Third Floor

Approx. 67.00 Sq. meters (721 Sq. feet)



Measurements are approximate and for illustration purposes only. While we do not doubt the accuracy and completeness, we advise you conduct a careful independent assessment of the property to determine monetary value.
© @modephoto.uk www.modephoto.co.uk

IMPORTANT NOTICE - These particulars have been prepared in good faith and they are not intended to constitute part of an offer or contract. We have not performed a structural survey on this property and the services, appliances and specific fittings have not been tested. All photographs, measurements, floor plans and distances referred to are given as a guide and should not be relied upon.

BUTLER & STAG

☎ 020 8102 1236

🏠 508 Roman Road, Bow, London, E3 5LU

✉ bow@butlerandstag.com

www.butlerandstag.uk